



# FITTINGS

## OUTLET BODIES WITH MOUNTING FLANGE



**GECXTF**  
XTF Type Outlet Body  
With Mounting Flange



**GECUET-2**  
Outlet Body



**GEUEAT-2**  
Outlet Body



**GECUWT-2**  
Outlet Body

- 1/2", 3/4" and 1" Bodies<sup>①</sup>  
Class I, Div. 1 & 2, Groups C, D  
Class I, Zone 1, Groups IIB, IIA  
Class II, Div. 1 & 2, Groups E, F, G  
Class III

UL LISTED File No. E 10514

SP<sup>®</sup> Certified File No. LR11716

### FEATURES-SPECIFICATIONS

See page F53 for Standard Materials & Features

#### Applicable Third Party Standards

UL Standards: 886 and 1203  
CSA Standard: C22.2 No. 30  
Fed Spec: W-C-586D  
Mil Spec: F-28675

#### Material/Finish Aluminum

- **BODY** Copper-free aluminum (less than 4/10 of 1%)
- **FINISH** Electrostatically applied powder coating
- **COVER** (Aluminum) Copper-free aluminum (less than 4/10 of 1%). Electrostatically applied powder coating

#### Iron

- **BODY** Duraloy iron alloy
- **FINISH** Tri-Coat Finish of Electro zinc, Chromate Sealant, and electrostatically applied powder coating
- **COVER** (Aluminum) Copper-free aluminum (less than 4/10 of 1%). Electrostatically applied powder coating

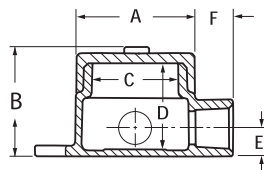
#### Size Ranges:

- Hub – 3/4" standard  
    **optional 1/2" to 1" contact factory**
- Cover opening – 2-11/16" or 2-1/16"

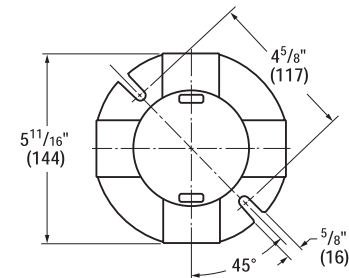
For ATEX and IEC Ex certified GEC Outlet Bodies, contact factory

① 1/2", 3/4" and 1" GEC Bodies Listed and Certified for:  
Class I, Div. 1 & 2, Groups B, C, D  
Class I, Zones 1 & 2, Groups IIB + H<sub>2</sub>  
Class II, Div. 1 & 2, Groups E, F, G  
Class III  
Type 4X (NEMA)

XTF TYPE OUTLET BODY*										
KILLARK ALUM.	DURALOY IRON	HUB SIZE	DIMENSIONS						COVER OPENINGS	VOLUME CU. IN.
			A	B	C	D	E	F		
GECXTF-1	GECXTF-1M	1/2"	3-11/16" (94)	3-5/8" (92)	2-11/16" (68)	2-3/4" (70)	1" (25)	13/16" (21)	2-11/16" (68)	19
GECXTF-2	GECXTF-2M	3/4"	3-11/16" (94)	3-5/8" (92)	2-11/16" (68)	2-3/4" (70)	1" (25)	13/16" (21)	2-11/16" (68)	19
GECXTF-3	GECXTF-3M	1"	3-11/16" (94)	3-5/8" (92)	2-11/16" (68)	2-3/4" (70)	1" (25)	13/16" (21)	2-11/16" (68)	19

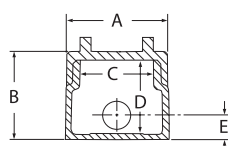
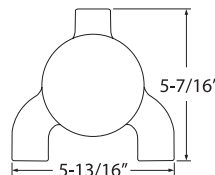


XTF Type  
With Mounting Flange

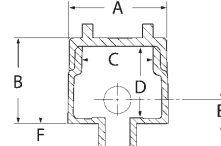
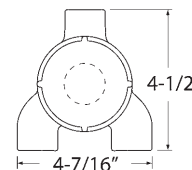


GE TYPE OUTLET BODY*										
KILLARK ALUM.	DURALOY IRON	HUB SIZE	DIMENSIONS						COVER OPENINGS	VOLUME CU. IN.
			A	B	C	D	E	F		
GECUET-2	GECUET-2M	3/4"	3-11/16" (94)	3-5/8" (92)	2-11/16" (68)	2-3/4" (70)	1" (25)	13/16" (21)	2-11/16" (68)	19
GEUEAT-2	GEUEAT-2M	3/4"	2-13/16" (56)	3" (76)	2-1/16" (52)	2-1/8" (54)	1" (25)	13/16" (21)	2-1/16" (52)	11
GECUWT-2	GECUWT-2M	3/4"	3-11/16" (94)	3-5/8" (92)	2-11/16" (68)	2-3/4" (70)	1" (25)	13/16" (21)	2-11/16" (68)	19

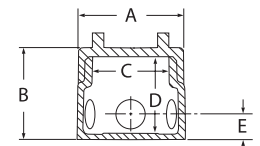
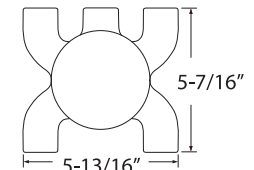
\* For GROUP B applications, contact factory.



**GECUET-2**  
Outlet Body



**GEUEAT-2**  
Outlet Body



**GECUWT-2**  
Outlet Body